



caENTI

Coordination Action of
the European Network of Territorial Intelligence
A project funded under FP6 of the E.U.
<http://www.territorial-intelligence.eu>



**CITIZENS AND GOVERNANCE IN A
KNOWLEDGE-BASED SOCIETY**



European Commission

caENTI scientific results, progress and prospects Tools for, with and by actors

Jean-Jacques GIRARDOT
Université de Franche-Comté
caENTI Scientific coordinator

caENTI dissemination seminar

Brussels

April, 16th 2009

Tools for, with and by actors

This activity, coordinated by the Université de Franche-Comté (France), designs, makes and disseminates methods and tools of territorial intelligence accessible to territorial actors and respecting the ethics of sustainable development.

It also aims at designing a European Observatory of Elementary School.

Catalyse data analysis tools

Catalyse uses four generic methods and instruments initially used by the laboratories:

- 1. Pragma, for quantitative analysis of individuals**
- 2. Anaconda for qualitative analysis: trends of data structure, typology and needs profiles**
- 3. Mapping and spatial analysis to represent and analyse the distribution of services with needs profiles and categories of services on a territory.**
- 4. Evaluation of actions relevance, efficiency and impact.**

Data gathering with Pragma

PRAGMA - Variables 13/02/2008 11:53:02

13 Ag Class of age

only one response is possible multiple responses are possible User : [redacted]

<input type="checkbox"/>	sans objet	0
<input type="checkbox"/>	non indiqué	0

E	1	Ag15	Less than 15
E	2	Ag17	From 15 to 17
E	3	Ag24	From 18 to 24
E	4	Ag34	From 25 to 34
E	5	Ag44	From 35 to 44
E	6	Ag54	From 45 to 54
E	7	Ag64	From 55 to 64
E	8	Ag74	From 65 to 74
E	9	Ag75	75 and more

Response [redacted] + ↑ - Delete 0

[redacted] Cross Index
List Values
Sort

PRAGMA, Copyright 1991-2005, MTI@SHS-ThéMA (UFC & CNRS), J.J. Girardot & C. Masselot.



Asalariado fijo

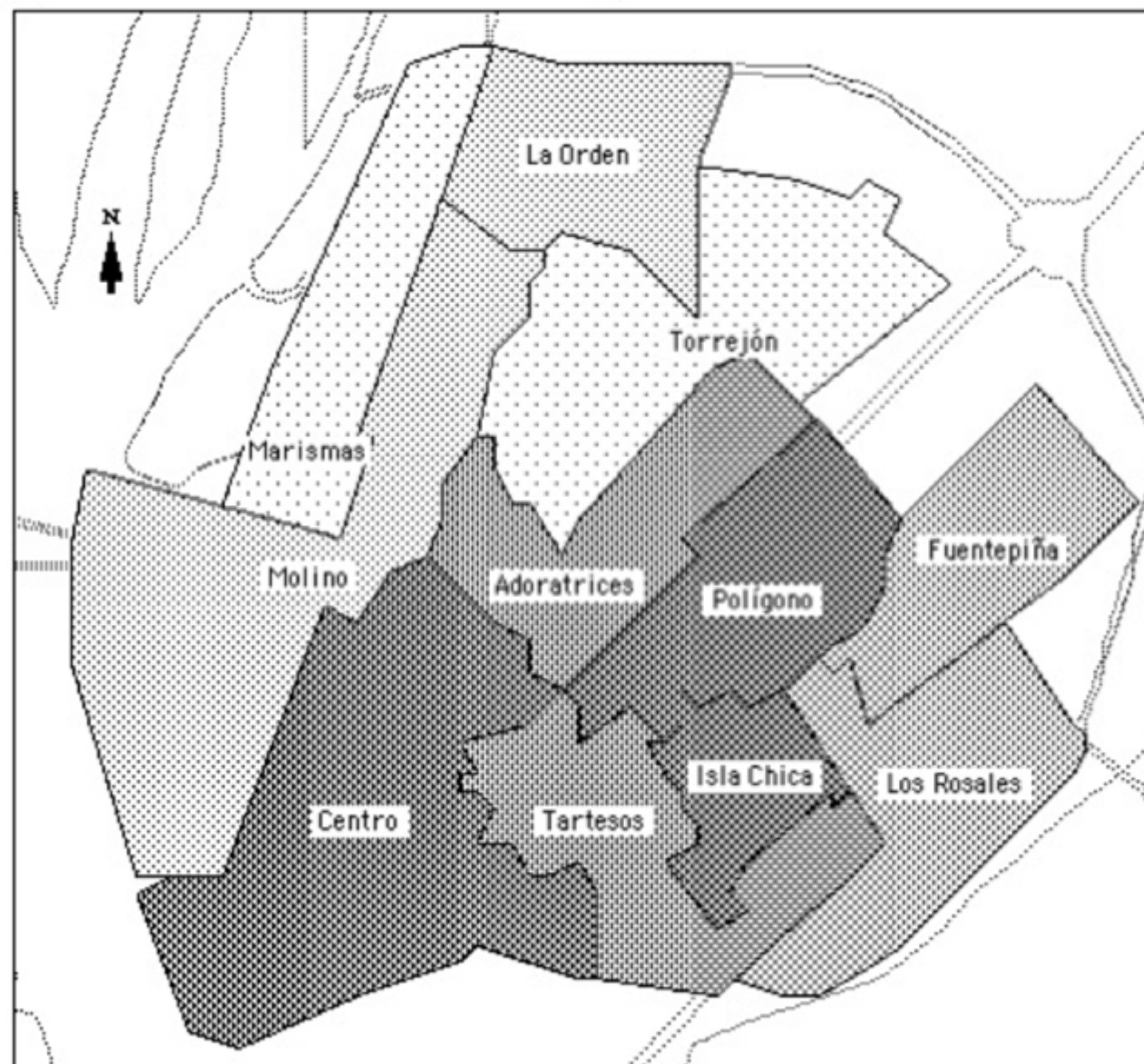
Barrio	numeró	%
Adoratrices	1876	12.93
Centro	4676	21.42
Fuentepiña	842	12.83
Isla Chica	2451	15.41
La Orden	2362	11.27
Los Rosales	1198	12.83
Marismas	170	4.50
Molino	1353	10.49
Polígono	1463	14.93
Tartesos	2461	13.68
Torrejón	443	6.48

% personas

	de 4.50 à 6.48
	de 6.49 à 11.27
	de 11.28 à 12.83
	de 12.84 à 13.68
	de 13.69 à 21.42

OLE

Mapa social de Helva

borrar el mapa

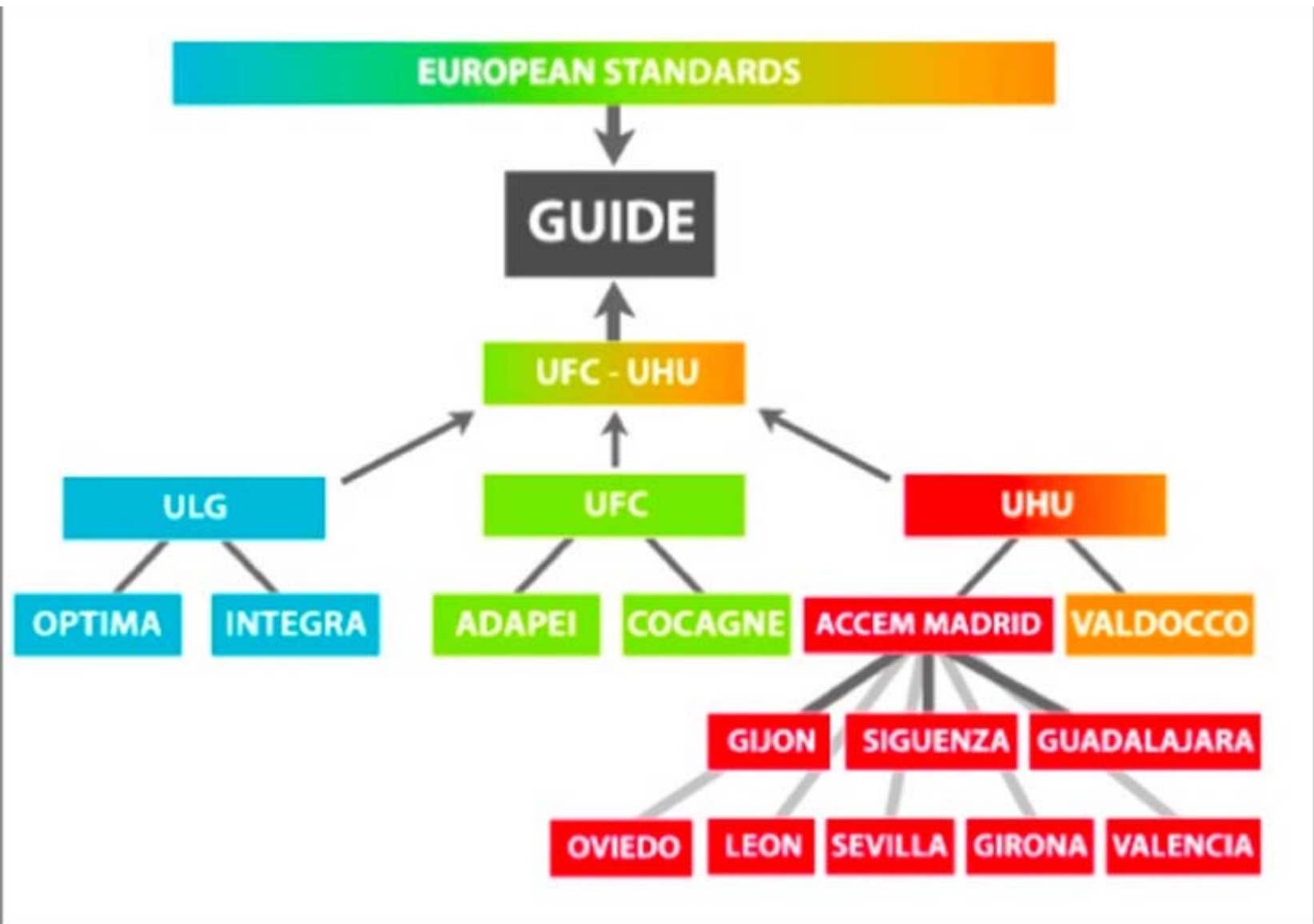
Tools progress

Research activities and technological developments of tools were led according to three axes:

- ✓ **The information contents**
- ✓ **The data analysis software**
- ✓ **The uses of these tools within the territorial multi-sector partnerships.**

During caENTI, the centre of interest progressively moved from tools to uses.

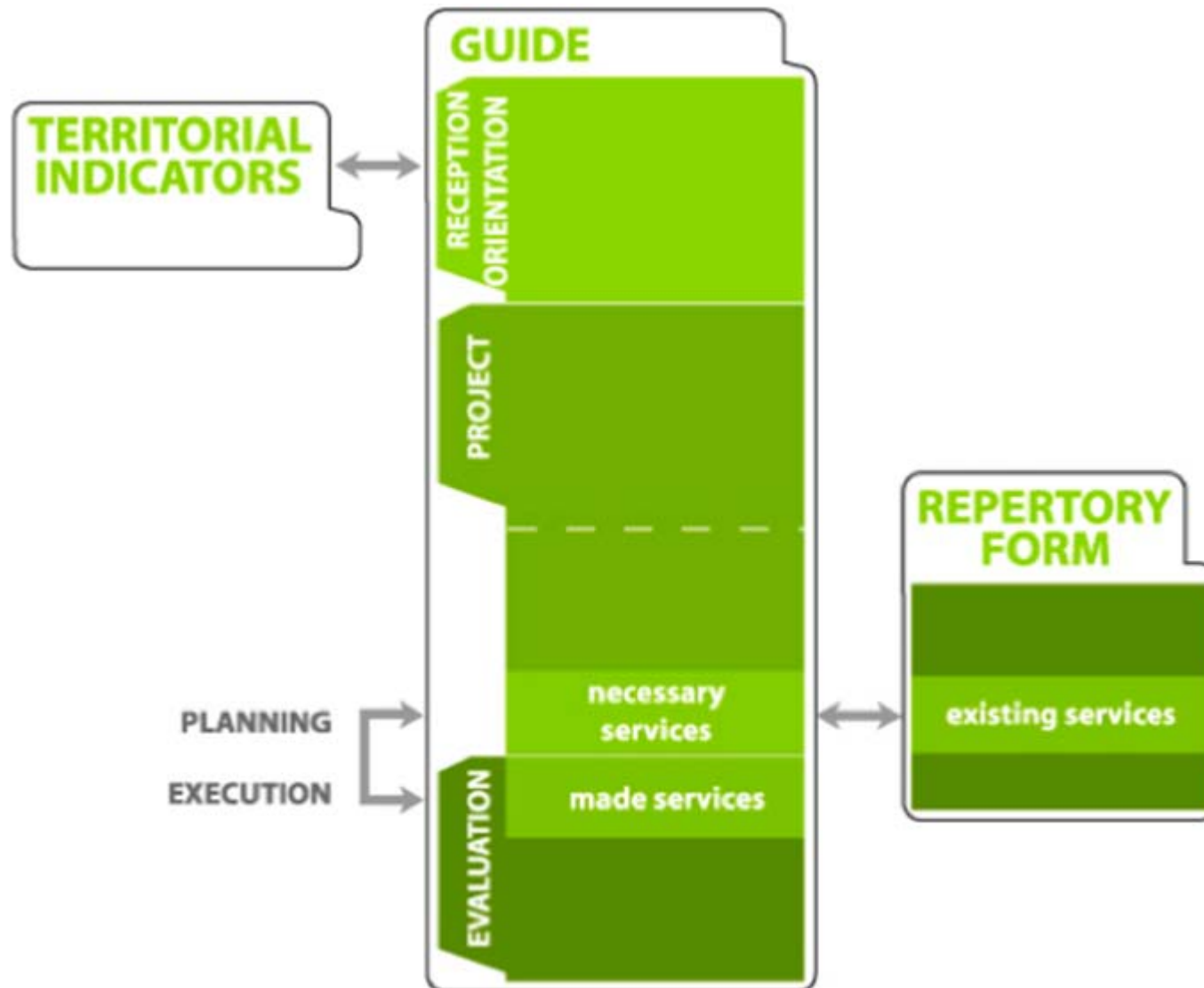
2006: harmonization



2007: tools integration



2007: contents integration (file)



Cross-platform Pragma

Pragma v 2.0

Pragma File Edit Coding/Recoding Analyze

Question Modalite Import/Export Gathering Import/Export

00110 11001

Questions

Quest name : Communication

Questions : 63

Rank	Code	Label
6	Sl	Scholarship
7	Pc	caENTI position
8	Pp	PCRDT Participation
9	Oe	Participation in other EU projects
10	Ow	If yes, in wich one?
11	Os	What status?
12	Lf	Fluency
13	Wl	Working language
14	Ct	Personal communication tools
15	Pt	Professional communication tools
16	Wc	Ways of professional communication
17	Po	Professional resources most often use
18	Is	Internet search tools you usually choose
19	I	Internet retrieval and storage information tools used
20	Pi	Print information usually produced and managed
21	Ei	Electronic information usually produced and managed
22	Ri	Within the caENTI, tools used to retrieve information
23	Rn	Within the caENTI, dedicated tools never used to retrieve information
24	Nr	Never used the Territorial Intelligence portal, why
25	Nc	Never used Coospace, why
26	Ni	Never used Intra-Consortium, why
27	Nr	Never used RSS, why
28	Es	Other efficient sources
29	Fr	Type of tools most frequently used to retrieve information about caENTI
30	Pv	Tools used to provide information about the activity in progress
31	Pr	Tools recently used to provide information
32	Pn	Dedicated tools never used to provide information
33	Nt	Never used the Territorial Intelligence portal, why
34	Nc	Never used Coospace, why
35	Ni	Never used the Intra-Consortium, why
36	Nk	Never used ConfTool, why

Individuals

AC1

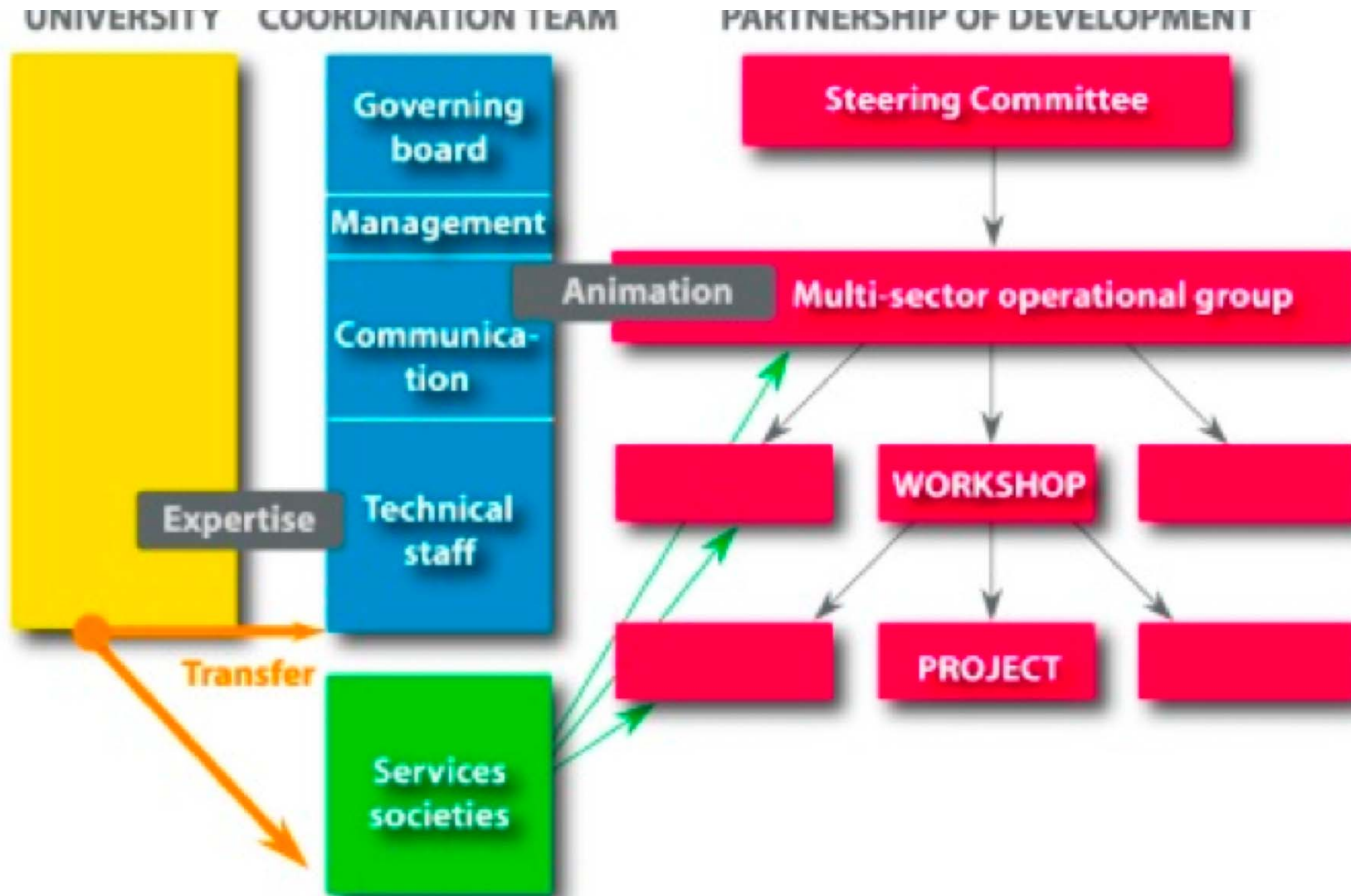
Individuals

- AC100000100
- AL400000100
- AM700000100
- AN500000100
- BA400000100
- BC200000200
- BE900000100
- BT700000100
- CA100000200
- CP300000100
- D3000000100
- DS600000100
- FF300000100
- GJ500000100
- GL300000100
- HB800000100
- ICE00000900
- ICE00001000
- ICE00001100
- ICE00001200
- ICE00001300
- ICE00001400
- ICE00001500
- ICE00001600
- ICE00001700
- ICE00001800
- ICE00001900
- ICE00002000

Total 47

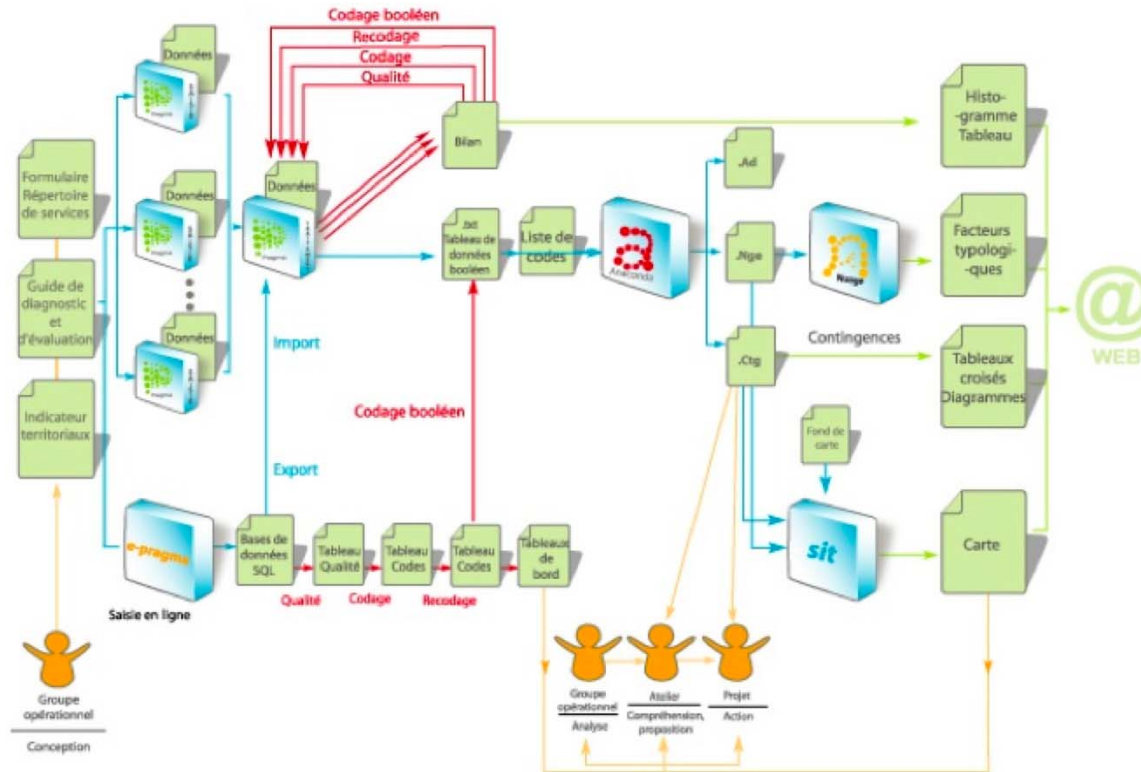
Selected 47

2008: observation governance within partnerships



2008: system modelling

share > cooperate > act > publish



Information + software + protocols for uses

Online multi-language epragma

The screenshot displays the Epragma software interface. At the top, there is a menu bar with options: Epragma, File, Edition, Questionnaire, Datas, Analyse, and Help. Below the menu is the epragma logo. A green navigation bar contains the text: Index / CAENTI / Evaluation of Communication /

Fill new individuals

4% of the filled questionnaire

Code individu: NON000000100

Wa Without Answer
 Wo Without Object

3 | Sp | Social position

Social position

1 SpTI	<input type="radio"/> Team Leader	0
2 SpOI	<input checked="" type="radio"/> Organization Leader	4
3 SpRe	<input type="radio"/> Researcher	0
4 SpEm	<input type="radio"/> Employee	0

Commentaire

4% of the filled questionnaire

Tools

Questionnaire

1	Ge - Gender
2	Ag - Age
3	Sp - Social position
4	Pa - Professional area
5	St - Kind of structure
6	SI - Scholarship
7	Pc - caENTI position
8	Pp - PCRDT Participation
9	Oe - Participation in other EU projects
10	Ow - If yes in wich one?
11	Os - What status?
12	Lf - Fluency
13	WI - Working language

Administration tools

Mode

Version: Epragma V2.0 beta [Standalone] - MTI / THEMA

Anaconda global integration

The screenshot displays the ThEMA software interface, which is used for 3D visualization and data management. The main window shows a 3D point cloud with three axes: Ax1 (red), Ax2 (green), and Ax3 (blue). The point cloud is composed of numerous small black dots. The interface includes several panels and controls:

- points:** A panel for configuring point properties, including code (Ag29), small label (Ag29), point color (red), and large label.
- descriptors:** A panel with buttons for "automatic generation" and "manual generation".
- limits:** A panel for setting drawing thickness (0.5) and drawing style, with a "use color" checkbox.
- cloud components:** A panel with two columns: "descriptors" and "data". The "descriptors" column lists various codes (DtCe, Dt3, DtCa, Dt5, DtSf, DtVe, DtSa, DtVi, DtPr, SxMa, SxFe, Ag25, Ag29, Ag39, Ag49, Ag50, CeNo, MoPe, MoPo). The "data" column lists subjects (ALE0001 to ALE0019) and characters (DtCe, Dt3, DtCa, Dt5, DtSf, DtVe, DtSa, DtVi, DtPr, SxMa, SxFe, Ag25, Ag39, Ag49, Ag50, CeNo, MoPe, MoPo).
- cod data:** A table showing data for selected codes. The table has columns for code, weight, and other attributes.
- console:** A panel at the bottom showing system messages: "cloud repainted" and "new groupes selections".

code	weight	
SxFe	X:44.0 Y:70.0 Z:52.0	Sexo Mujer
Ag25	X:3.0 Y:54.0 Z:0.0	Edad Menos de 16 + De 17 a 18 + D
Ag29	X:0.0 Y:36.0 Z:1.0	Edad De 26 años hasta 29 años

Catalyse CMS first TICS



NOTICIAS

- Noticias

ODINA

- Presentación institucional
- Presentación general del Proyecto
- Socios
- Talleres
- Acciones

OBSERVATORIO

- Metodología y herramientas
- Diagnóstico territorial
- Repertorio de Actores y Acciones
- Estadísticas y mapas
- Publicaciones

ESPACIO INTERCULTURAL

- Espacio intercultural

FORO

- Foro

ENLACES

- Enlaces

Nombre de usuario

Contraseña

Recordarme

- ¿Olvidó su contraseña?
- ¿Olvidó su nombre de usuario?

Observación Cooperativa ODINA Evaluación Participativa



Qué es ODINA

ODINA, es un grupo constituido por diferentes entidades e instituciones (públicas, privadas, ONG,s, sindicatos, asociaciones) que intervienen de forma directa y transversal con el colectivo de inmigrantes, en aspectos relacionadas con la

integración y promoción social de este colectivo en Asturias (salud, educación, empleo, vivienda, formación, etc.).

Uno de los principales objetivos que persigue ODINA es el de analizar y evaluar de manera dinámica el contexto socio-económico en el que viven los/as inmigrantes en Asturias.

Este Grupo es el encargado de poner en marcha y desarrollar el Observatorio Permanente de la Inmigración de Asturias; metodología, diagnóstico territorial, indicadores territoriales, repertorio de actores y acciones.

Los principios que lo orientan son:

- Participación ciudadana.
- Aproximación global del territorio.
- Partenariado de los actores locales.
- Tecnologías de la sociedad de la información.
- Accesibilidad de la información.
- Calidad de la información.

Las acciones que lleva a cabo ODINA, se articulan a través de tres Talleres. Los Talleres que existen en la actualidad son:

- Taller de Educación.
- Taller de Acompañamiento Socio-económico (Formación y Empleo).
- Taller de Exclusión.

ODINA, esta abierto a otras entidades e instituciones interesadas en participar.

NOTICIAS

- 11/10/2008
LOS INMIGRANTES SOLO PODRAN TRAER A SUS PADRES A PARTIR DE LOS CINCO AÑOS DE RESIDENCIA
- 11/10/2008
PRESTACION CONTRIBUTIVA POR DESEMPLEO A TRABAJADOR@S EXTRANJER@S
- 30/09/2008
REUNIÓN DEL TALLER DE EDUCACIÓN DE ODINA.

ARCHIVOS

- Consultar los archivos



Promociona:

ACCEM



Colabora:



Experimentations

ACCEM migration observatories network



Uses recommendations of OPTIMA and INTEGRA Plus
A new experience started in Chapelle-lez-Herlaimont in Belgium, on the basis of the uses recommendations made by the caENTI Walloon participants.
All the caENTI territorial actors develop experimentations.

European observatory of school

Studied the feasibility of a European observatory from the experiment of the French observatory of rural school (OER)

Transferred the OER database towards a TICS

Organised several seminars on the European educational systems