



## **SECOND INTERNATIONAL ANNUAL CONFERENCE OF TERRITORIAL INTELLIGENCE**

(that is organized with the Coordination Action of the European Network of Territorial Intelligence. Sixth Framework program of Research and Technological Development of the European Union)

## **TERRITORIAL INTELLIGENCE AND GOVERNANCE**

### **PARTICIPATORY RESEARCH-ACTION AND TERRITORIAL DEVELOPMENT**

C A E N T I

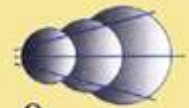
Coordination Action of the European  
Network of Territorial Intelligence



Coordination Action of the European  
Network of Territorial Intelligence  
A project funded under FP6 of the E.U.



Universidad  
de Huelva



OBSERVATORIO  
LOCAL DE  
EMPLEO

UNIVERSITY OF HUELVA

Huelva (Spain)

October, 24<sup>th</sup> -27<sup>th</sup> 2007

# Presentation

Second International Annual Conference of Territorial Intelligence



The Second Annual International Conference of Territorial Intelligence focuses on the debate about the relationship between TERRITORIAL INTELLIGENCE and GOVERNANCE.

It also pays special attention to the role that PARTICIPATIVE RESEARCH-ACTION APPLIED TO TERRITORIAL DEVELOPMENT plays within GOVERNANCE promotion. Therefore, an advanced version of the ***Letter of Quality on Research-Action Applied to Sustainable Territorial Development***, which has been prepared by the CAENTI-WP5 during this year, will be presented in this event for a general debate.

That is why the accepted communications deal with the following topics:

- Different Approaches of Territorial Intelligence.
- Tools of Territorial Analysis.
- Studies on Territorial Sustainable Development.
- Reflections about Research-Action and the Role of Participation.
- General Aspects about the Relationship between Participation and Governance.
- Participative Experiences and their Impact on Governance.

# Scientific Committee

Second International Annual Conference of Territorial Intelligence



## President

- Moise Ioan ACHIM, *University of Alba Iulia, Rumanía.*

## Coordination Scientific Committee

- Jean-Claude DAUMAS, *University of Franche-Comté.*
- Dolores REDONDO TORONJO, *University of Huelva.*
- Jean-Jacques GIRARDOT, *University of Franche-Comté.*
- Mihai PASCARU-PAG, *University of Alba Iulia, Rumanía.*

## Members of the Scientific Committee

- François FAVORY, *University of Franche-Comté.*
- Serge ORMAUX, *University of Franche-Comté.*
- Luc GRUSON, *University of Franche-Comté.*
- Blanca MIEDES UGARTE, *University of Huelva.*
- Manuela DE PAZ BAÑEZ, *University of Huelva.*
- Guénaël DEVILLET, *University of Lieja.*
- Bernadette MERENNE-SCHOUMAKER, *University of Lieja.*
- Serge SCHMITZ, *University of Liege.*
- Csilla FILO, *University of Pécs.*
- Zoltan WILHELM, *University of Pecs.*
- Ioan ILEANA, *University of Alba Iulia, Rumanía.*
- Natale AMMATURO, *University of Salerno.*
- Pierre CHAMPOLLION, *University of Salerno.*
- Yves ALPE, *University of Salerno.*
- Kristof OSTIR, *Scientific Research Centre of the Slovenian Academy of Sciences and Arts.*
- Ruey-Ming TSAY, *University of Tunghai.*
- Julia FERNANDEZ QUINTANILLA, *(ACCEM).*
- Jean-Marie DELVOYE, [Optim@-Observación](#) (*Observación, Participation, Territory, Methods, Integration and Action*)
- Christiane MARECHAL-RULOT, *Association Intégral Plus.*
- Jean-Guy HENCKEL, *Association Jardins de Cocagne*

# Organisational Committee

Second International Annual Conference of Territorial Intelligence



## Organisational Committee in the University of Huelva

### Coordinator

- Blanca MIEDES UGARTE, *University of Huelva*. [miedes@uhu.es](mailto:miedes@uhu.es)

### University of Huelva team

- Manuela DE PAZ BAÑEZ, *Local Employment Observatory (UHU)*.
- Dolores REDONDO TORONJO, *Local Employment Observatory (UHU)*.
- María José ASENSIO COTO, *Local Employment Observatory (UHU)*.
- María de la O BARROSO GONZÁLEZ, *University of Huelva*.
- Celia SÁNCHEZ LÓPEZ, *Local Employment Observatory (UHU)*.
- Olga MINGUEZ MORENO, *Local Employment Observatory (UHU)*.
- Germán PÉREZ MORALES, *Local Employment Observatory (UHU)*.
- Antonio MORENO MORENO, *Local Employment Observatory (UHU)*.
- Víctor M. ROBLES BUSTAMANTE, *Local Employment Observatory (UHU)*.
- Margarita FUENTES GARCÍA, *Local Employment Observatory (UHU)*.
- María Isabel FRANCO LIGENFERT, *Valdocco Foundation*.
- Julia FERNÁNDEZ QUINTANILLA, *(ACCEM)*
- Estrella GUALDA CABALLERO, *Department of Sociology and Social Work (UHU)*
- Jesús MONTEAGUDO LOPEZ-MENCHERO, *Department of History II (UHU) and International University of Andalucía (UNIA)*

# Programme

Second International Annual Conference of Territorial Intelligence



From:	To:	Day 24: VALDOCCO. Social and Labour Inclusion Centre		
9:00h	10:30h	Welcome and registration*.		
9:00h	10:30h	Steering Committee**.		
10:30h	11:00h	Coffee break.		
11:00h	12:00h	Scientific and Editorial Committee. WP2 Issues Debate.		
12:00h	13:00h	WP3 Issues Debate. Plenary Session.		
13:00h	15:00h	Lunch at Valdocco Atrium. Networking		
15:00h	15:30h	CAENTI Global Programming. Plenary Session.		
15:30h	16:30h	WP4 Internal Workshop: Final Programming.	WP5 Internal Workshop: Final Programming.	WP6 Internal Workshop: Final Programming.
16:30h	17:00h	Coffee break.		
17:00h	18:00h	WP4 internal workshop: Final Programming.	WP5 internal workshop: Final Programming.	WP6 internal workshop: Final Programming.
18:00h	19:00h	Conclusions on CAENTI Global Programming. Plenary Session.		
19:00h	19:30h	Transport to the hotel.		
21:00h		Dinner in "Patron" Restaurant.		

\*\* Members of the Steering Committee will be picked up at 8:45h. at Monteconquero Hotel.

\* The rest of participants will be picked up at 9:30h. at Monteconquero Hotel.

# Programme

Second International Annual Conference of Territorial Intelligence



From:	To:	Day 25: Assembly Hall of the Faculty of Business Administration in <i>La Merced</i> Campus
9:00h	9:30h	Welcome and registration.
9:30h	10:00h	Opening Ceremony: Prof. Dr. Francisco MARTÍNEZ. Rector of the University of Huelva. Mr. Jacinto CAÑETE. Regional Government, General Director. Ms. M <sup>a</sup> José RODRIGUEZ. Regional Government representative in Huelva province. Dr. Jean-Jacques GIRARDOT. CAENTI Coordinator. Dr. Blanca MIEDES. Conference Coordinator.
10:00h	11:15h	First Conference: Prof. Dr. Carlos BERZOSA (Rector of the Complutense University of Madrid) "Challenges of World-Wide Governance" Debate.
11:15h	11:45h	Coffee break.
11:45h	13:00h	Second Conference: Dr. Tomás RODRÍGUEZ VILLASANTE (Complutense University of Madrid) "Research-Action Applied to Territorial Development" Debate.
13:00h	13:30h	Posters.
13:30h	15:00h	Lunch at La Merced Atrium. Networking.
15:00h	15:45h	WP4 Scientific Presentation: Territory Concept and Territorial Analysis Tools. Chair: Csilla Filo (University of Pécs, WP4 Leader).
15:45h	16:30h	WP6 Scientific Presentation: Methods and Technological Tools Applied to Research-Action Chair: Dr. Jean-Jacques GIRARDOT (University of Franche-Comté, WP6 Leader)
16:30h	17:00h	Coffee break.
17:00h	18:30h	WP5 Scientific Presentation: Debate on the "Letter of Quality of Research-Action" proposal. Chair: Dr. Blanca MIEDES (University of Huelva , WP5 Leader).
21:00h		Official Dinner in "Peña Flamenca" of Huelva.

# Programme

Second International Annual Conference of Territorial Intelligence



From:	To:	<b>Day 26: Seminar Rooms and Assembly Hall of the Faculty of Business Administration in <i>La Merced</i> Campus.</b>		
9:00h	11:00h	1. Territorial Intelligence Approaches Moderated by: Dr.P. DUMAS (Room 12)	3. Sustainable Territorial Development Studies Moderated by: Dr. M. J. ASENSIO (Room 18)	5. Participation and Governance (general issues) Moderated by: Dr. D. REDONDO (Press Room)
11:00h	11:30h	Coffee break.		
11:30	13:30h	2. Territorial Analysis Tools Moderated by: Dr. A. MOINE (Room 12)	4. Reflections on Research Action Moderated by: T. SACCHIERI (Room 18)	6. Participation and Governance (Experiences) Moderated by: J. FERNÁNDEZ (Press Room)
13:30h	15:00h	Lunch at La Merced Atrium. Networking.		
15:00h	16:30h	Plenary debate: "Universities - Territorial Actors Relationship within the Framework of Research-Action: Potentialities and Limits" Moderated by: Prof. Dr. M. A. DE PAZ BÁÑEZ		
16:30h	17:00h	Coffee break.		
17:00h	18:30h	Plenary Debate: "New Technologies and Information Treatment within the Framework of Research-Action: Ethical and Organizational Problems" Moderated by: Dr. C. MASSELOT		
18:30h	19:00h	Break.		
19:00h	20:00h	Synthesis and Closure.		

# Programme

Second International Annual Conference of Territorial Intelligence



## Day 26: Seminar Room 12 at 9:00h.

### **WORKSHOP 1: Territorial Intelligence Approaches**

Papers:	Authors:
Composite Picture to Help to Study and to Define a Regional Economic Intelligence System	Stéphane GORIA, Audrey KNAUF
Transference of Technology Between Research Units and Companies. An Approach to a Centred Model in the Impact on the Strategic Targets.	Juan Ignacio DALMAU PORTA; Bernardo Javier PÉREZ CASTAÑO; Joan Josep BAIXAULI I BAIXAULI
Application of Territorial Intelligence focused on the Cultural Heritage and of the Reaffirmation of Territorial Entities: "Pays" in France. The Case of Couserans (Ariège - Pyrenees)	Christian BOURRET, Sophie LACOUR
Contribution of Socio-Technical Systems Theory Concepts to a Framework of Territorial intelligence	Philippe DUMAS, Jean-Philippe GARDERE, Yann BERTACCHINI
From Territorial Intelligence to Competitive & Sustainable System	Yann BERTACCHINI
Research, Sense Co-building and Action	Julien ANGELINI
RET: Network for the Understanding of the Territory	Horacio BOZZANO, Sergio RESA, Verónica VÁSQUEZ

# Programme

Second International Annual Conference of Territorial Intelligence



## Day 26: Seminar Room 12 at 11:00h.

### **WORKSHOP 2: Territorial Analysis Tools**

Papers:	Authors:
Urban HyperScape: a Community Game for Territorial Knowledge	Oral presentation: Philippe WOLOSZYN
Collaborative Planning Support Systems: Exploiting Geographic Information and Communication Technology in Sustainable Spatial Planning	Oral presentation: Michele CAMPAGNA
Quand l'observation vient influencer sur le système de gouvernance locale: l'expérience OSER 70	Alexandre MOINE, Philippe SIGNORET
E-PRAGMA: Software Tool for the Territorial Intelligence Distributed Systems	Jean Jacques GIRARDOT, Cyril MASSELOT <i>et al.</i>
The Air-Ténéré National Natural Reserve (RNNAT) Observatory: Territorial Intelligence for Sustainable Development	FLETY Yann, GIAZZI Franck
Analyzing Survey Data Concerning the Construction of Central Taiwan Science Park using Association Rules, Neural Networks and Geographical Information Systems	Fang-Yie LEU
Theoretical Approach of Network Communication and Collaboration in Research	Peter ACS
Inter-visibility, a Concept at the Service of Territorial Intelligence, a Tool at the Service of Governance	Serge ORMAUX
Territorial Information System: Dynamic Cartography of Transport's Traffic in Alsace	Olivier QUOY
Modeling Urbanization to Simulate Prospective Scenarios: a Comparative Approach	Jean Phillippe ANTONI, Cécile TANNIER, Pierre FRANKHAUSER, VUIDEL, Samy YOUSSEFI

# Programme

Second International Annual Conference of Territorial Intelligence



## Day 26: Seminar Room 18 at 9:00h.

### **WORKSHOP 3: Sustainable Territorial Development Studies**

Papers:	Authors:
Demographic Characters and their Impacts in a Hungarian Region	Zoltan WILHELM
Territorial Intelligence for Durable Development and Social-Economical Cohesion	Natale AMMATURO
Migrations and Territorial Governance in Europe	Amélie BICHET-MIÑARO
Observation of Saharan Territorial Structures and Dynamics	Yaël KOUZMINE, Khaled IBRAHIM, Marie-Hélène de SEDE-MARCEAU, Jacques FONTAINE
Rural Development through the Participation of the Local Actors: a Case Study	Tomás J. LÓPEZ-GUZMÁN GUZMÁN; Rachida Mohamed AMAR; Armando FERREIRA; Eva AGUDO GUTIÉRREZ
Key Productive Sectors in Andalusia, a Model of Participative Investigation of the UTEDLTs	Alberto PASCUAL NUÑO, Aurora CASADO SEDA
Human Factors of Territorial Competitiveness	Csilla FILÓ
The Dynamics of a Territory: the Main Actors of Sustainable Development in the Irno Valley	Giovanna TRUDA
The Centres of Tourist Intelligence as a Tool for the Competitive Improvement of the Tourist Destinations: the Case of Andalusia.	María de la O BARROSO GONZÁLEZ y David FLORES RUIZ
Designing New Levels of Knowledge for an Active Management of Natural-Parks Tourism	Juan Ignacio PULIDO FERNÁNDEZ y David FLORES RUIZ

# Programme

Second International Annual Conference of Territorial Intelligence



## Day 26: Seminar Room 18 at 9:00h.

### **WORKSHOP 3: Sustainable Territorial Development Studies (cont.)**

Papers:

Authors:

Modelo de desarrollo local aplicado a la industria manufacturera del chocolate en Pozoblanco.

Carlos INFANTE REJANO y M<sup>a</sup> José DUEÑAS CABRERA

El Análisis del tejido empresarial como estrategia metodológica para la promoción económica de los territorios.

Rosario RODRÍGUEZ RUCIERO y Antonio Jesús GONZÁLEZ REYES

Indicators for the Analysis of Tourism Sustainability in Andalusia

Juan Ignacio PULIDO FERNÁNDEZ, Fernando LARA DE VICENTE y Rafael MERINERO RODRÍGUEZ

Identité territoriale et projets de mobilité géographique chez les collégiens des milieux ruraux

Jean-Louis POIREY

Elements to Consider in the Territorial Operationalisation of Sustainable Development

Olga MÍNGUEZ MORENO

Territorial Governance and Residential Welfare: Experiences from Taiwan

Jing SHIANG

# Programme

Second International Annual Conference of Territorial Intelligence



## Day 26: Seminar Room 18 at 11:00h.

### **WORKSHOP 4: Reflections on Research Action**

Papers:

Authors:

Generating Transferable Knowledge from Local Territorial Project Evaluations – Developing a Methodology for Generalising from Unique Cases. Lessons from National and Transnational Urban Governance Investigations.

Oral presentation: Philip POTTER

Reorganization of Conventional Research Encouraged by the Participative Production

Oral presentation: Kawtar NAJIB,  
Karima ASKASSAY

Landscape and Participation: Construction of a PhD Research Problem and an Analysis Method. Towards the Comparative Analysis of Participatory Processes of Landscape Management Projects Design on a Local Scale in the Walloon Region (Belgium)

Emilie DROEVEN

The Restoring of Inquiry Results in Action Research and the Community Development Founding

Mihai PASCARU

# Programme

Second International Annual Conference of Territorial Intelligence



## Day 26: Press Room at 9:00h.

### **WORKSHOP 5: Participation and Governance (General Issues)**

Papers:

Implication Actors, Pedagogy of Gouvernance

Participación social. Incidencia en la gobernanza local

Territorial Actors of Medium-Sized Cities with HST

Social Participation of Rural Youth in Development in Two Villages in Kena Governorate in Egypt

Territorial Development and Governance: Third Sector Organizations

The Effect of Participation in the Development of Local Agenda 21 in the European Union

Territorial Intelligence and Equity in Health

Desastres naturales e inteligencia territorial en Latinoamérica

The Social Capital as a Tool for Territorial Development

Authors:

Oral presentation: Philippe HERBAUX

Oral presentation: Maribel FRANCO LIGENFERT

Jaume FELIU

Saker EL NOUR

Emiliana MANGONE

Jose Manuel PRADO-LORENZO,  
Isabel M<sup>a</sup> GARCÍA-SANCHEZ

Tullia SACCHERI

María Eugenia PETIT-BREUILH  
SEPÚLVEDA

Guiomar MORALES NAVARRO

# Programme

Second International Annual Conference of Territorial Intelligence



## Day 26: Press Room at 11:00h.

### **WORKSHOP 6: Participation and Governance (Experiences)**

Papers:

Authors:

Influence of Contexts and Organisation of the Association in the Implementation of a System for Users' Pathways

Anne PERETZ, Jean-Pierre MULLER

Analysis of a Research-Action Participative Land Planning Process. The SCOT de Thau (France)

Pierre MAUREL., P. BOTS, D. CROCHET, M. FELTER, H. REY-VALETTE, JP. ROUSSILLON, JJ. TAILLADE, H. VAN DUIJN, Y. VON KORFF

Educational Compensation Joint Plan: a Real Application Inside District V of Huelva

Manuela Coronada GARCÍA FERNÁNDEZ

Los procesos participativos en las Agendas Locales 21: el caso de Punta Umbría (Huelva)

María de la O BARROSO GONZÁLEZ e Irene CORREA TIERRA

Del enfoque participativo a un trabajo de acompañamiento y seguimiento. El caso de dos proyectos territoriales de inserción por el empleo en Charleroi. Bélgica

Dolores REDONDO TORONJO, José Luis DE SOLA BEJARANO y Juan Sebastián GONZÁLEZ RODRÍGUEZ

Une grille de diagnostic dans le cadre d'une gestion durable et participative des lieux publics

Elisabeth DUMONT, Wafa Ben SEDRINE, Saraï DE GRAEF, Marc PHILLIPOT, Isabelle DALIMIER, Serge SCHMITZ

# Programme

Second International Annual Conference of Territorial Intelligence



## Day 26: Press Room at 11:00h.

<b>Day 26: Press Room at 11:00h.</b>	
<b>WORKSHOP 6: <u>Participation and Governance (Experiences) (cont.)</u></b>	
Papers:	Authors:
Application pratique d'une démarche d'intelligence territoriale: un quartier de Seraing (Belgique)	Pierre DOYEN, Emmanuelle BRUNETTI
Observación estratégica y partenariado: potencialidades y límites. El caso de los observatorios ACCEM	Blanca MIEDES
Territorial Participation. Analyzing the Results of a Participative Research-Action Project: the Design of a Territorial Employment Strategy	Celia SÁNCHEZ, Blanca MIEDES

# Programme

Second International Annual Conference of Territorial Intelligence



<b>From:</b>	<b>To:</b>	<b>October, 27<sup>th</sup>: Optional Trip to "Minas de Rio Tinto" in Huelva province.</b>
9:00h	10:30h	Networking: meetings of the Steering Committee, Scientific Committee, Organizational Committee, CAENTI thematic meetings, meetings among participants.
10:30h	19:00h	Trip to Minas de Río Tinto.

# Workshops Methodology

Second International Annual Conference of Territorial Intelligence



In order to give as much time as possible to the debate, only two oral communications were selected in each workshop to be directly presented by the authors.

Selected communications are those which best correspond to the aspects to be debated within the workshops.

The moderator will summarize the other communications giving basis for the debate. Authors will have some minutes to make some remarks about their contributions.

# Translation

Second International Annual Conference of Territorial Intelligence



Plenary Sessions will be simultaneously translated into Spanish-French and Spanish-English.

In the workshops, the language for interventions will be English, Spanish or French, in every case they will be supported by a Power Point presentation written in English.

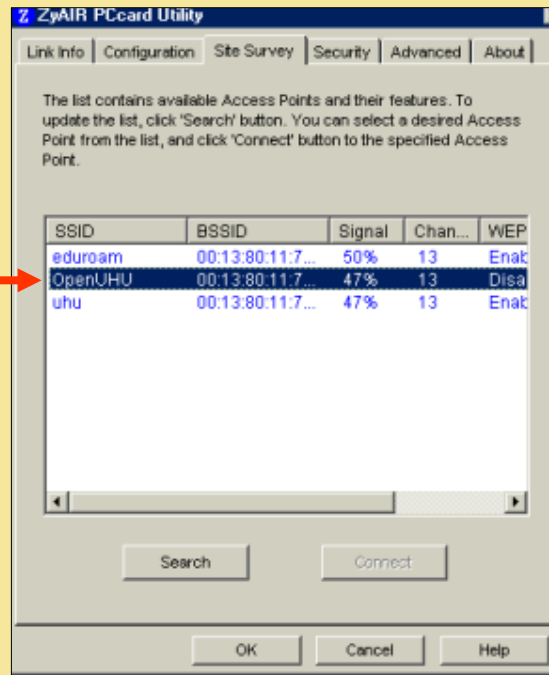
Organizers will guarantee communication in the three languages in every workshop.

# HOWTO connect to OpenUHU WIFI

Second International Annual Conference of Territorial Intelligence



## 1. Scan WIFI networks and select OpenUHU

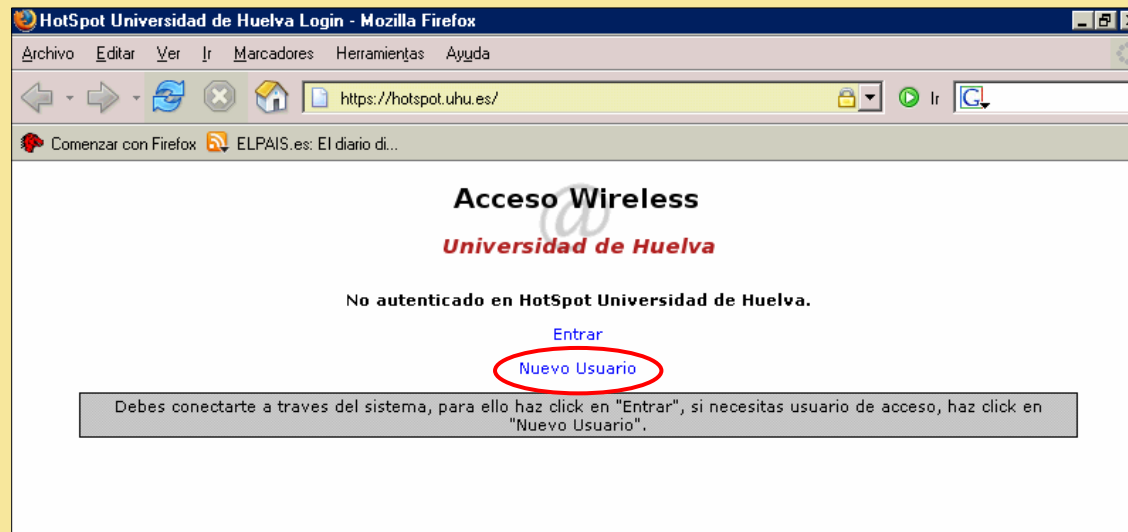


# HOWTO connect to OpenUHU WIFI



Second International Annual Conference of Territorial Intelligence

2. Open your browser and accept the temporal certificate.
3. In the access wireless screen, click on “Nuevo usuario” (New user) option. [Only for the first time: new registration user].



# HOWTO connect to OpenUHU WIFI

Second International Annual Conference of Territorial Intelligence



4. Fill the form with your personal information:

The screenshot shows a Mozilla Firefox browser window displaying the 'Portal Cautivo Universidad de Huelva'. The page title is 'Acceso Wireless Universidad de Huelva'. Below the title, it asks the user to 'Introduzca sus datos personales' (Enter your personal data). The form contains the following fields:

Field Label	Field Type	Label
Nombre de Usuario: (*)	Text Input	USERNAME
Password: (*)	Text Input	PASSWORD
Repita Password: (*)	Text Input	RE-PASSWORD
Nombre: (*)	Text Input	NAME
Apellidos: (*)	Text Input	SURNAME
Email: (*)	Text Input	EMAIL
Fecha de Nacimiento:	Text Input	} Don't fill
DNI:	Text Input	
Genero: Hombre	Dropdown	
Codigo Postal:	Text Input	} Retype the control key
i e F 6 i		

The browser's address bar shows the URL <https://hotspot.uhu.es/tom.py/entrada>. The status bar at the bottom indicates 'Terminado' and the domain 'hotspot.uhu.es'.

# HOWTO connect to OpenUHU WIFI



Second International Annual Conference of Territorial Intelligence

5. Get into wireless and click on "Entrar" (Enter) option:

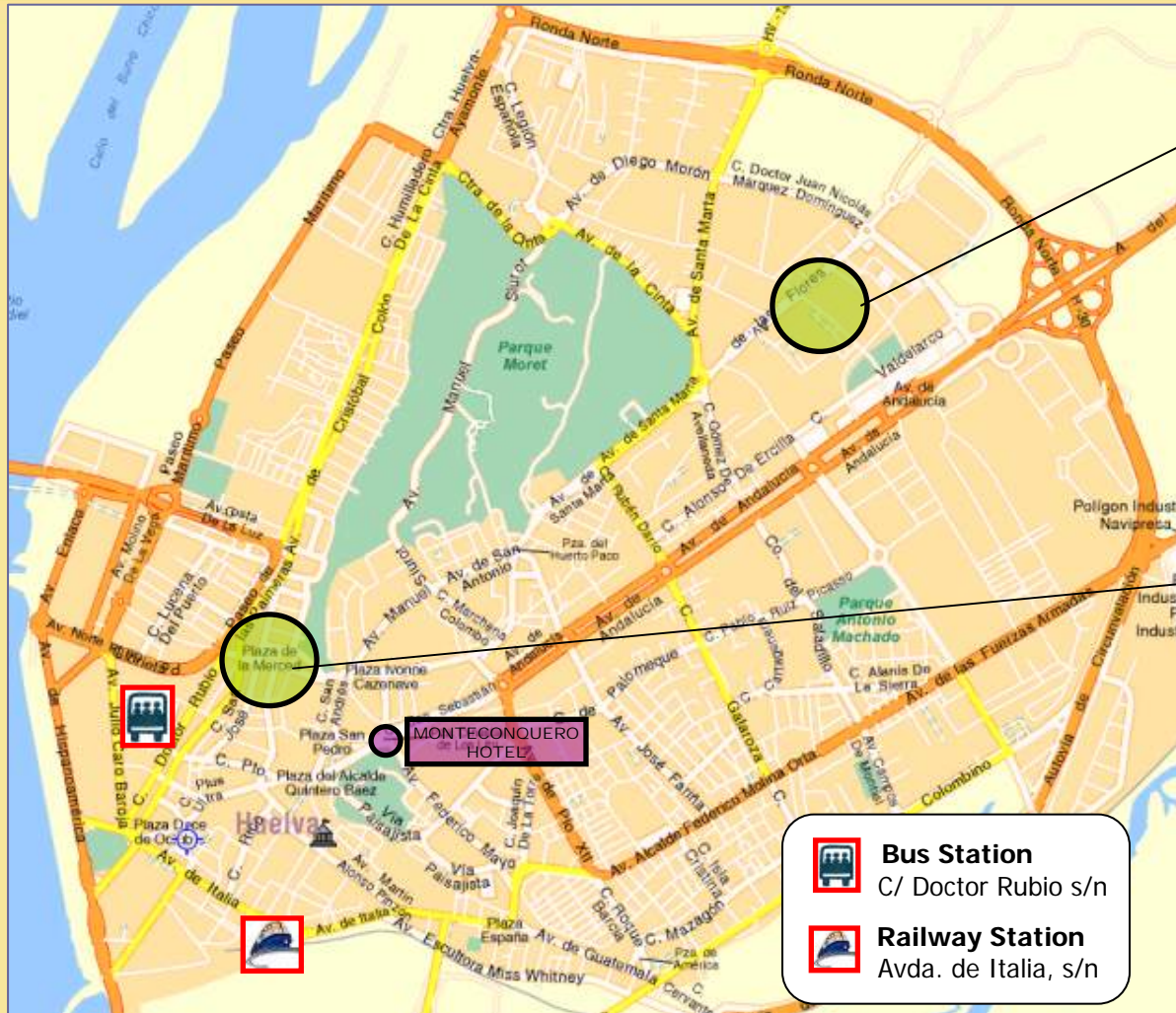


6. The next screen shows that you have connected to the OpenUHU WIFI.



# Workshop Location

Second International Annual Conference of Territorial Intelligence



## Fundación Valdocco Social and Labour Inclusion Centre

C/ Gladiolo, s/n.  
21005 Huelva



## University of Huelva «La Merced» Campus

Plaza de la Merced, 11.  
21071 Huelva



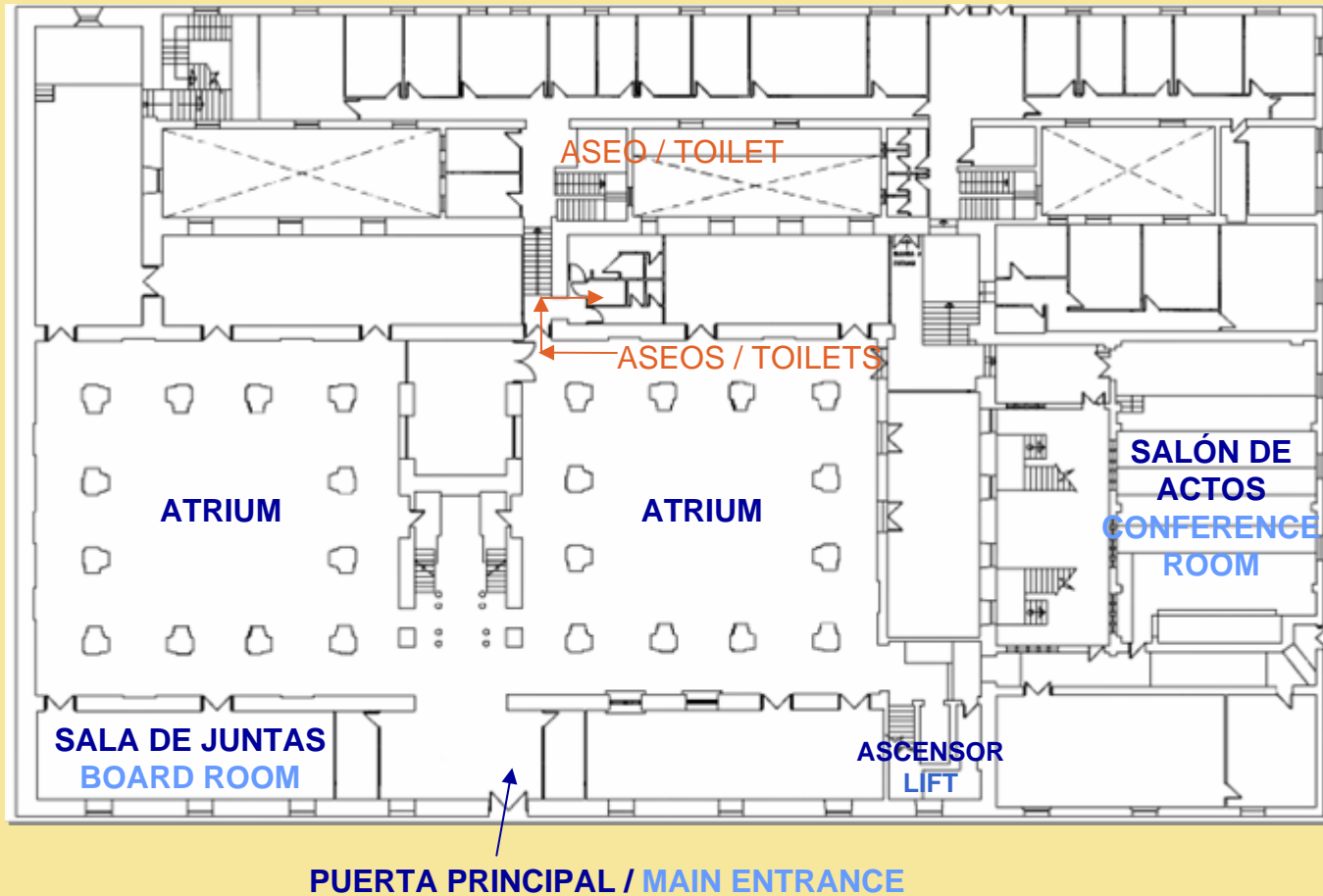
-  **Bus Station**  
C/ Doctor Rubio s/n
-  **Railway Station**  
Avda. de Italia, s/n

# Spaces location map. CAENTI La Merced Campus.

Second International Annual Conference of Territorial Intelligence



## Ground floor

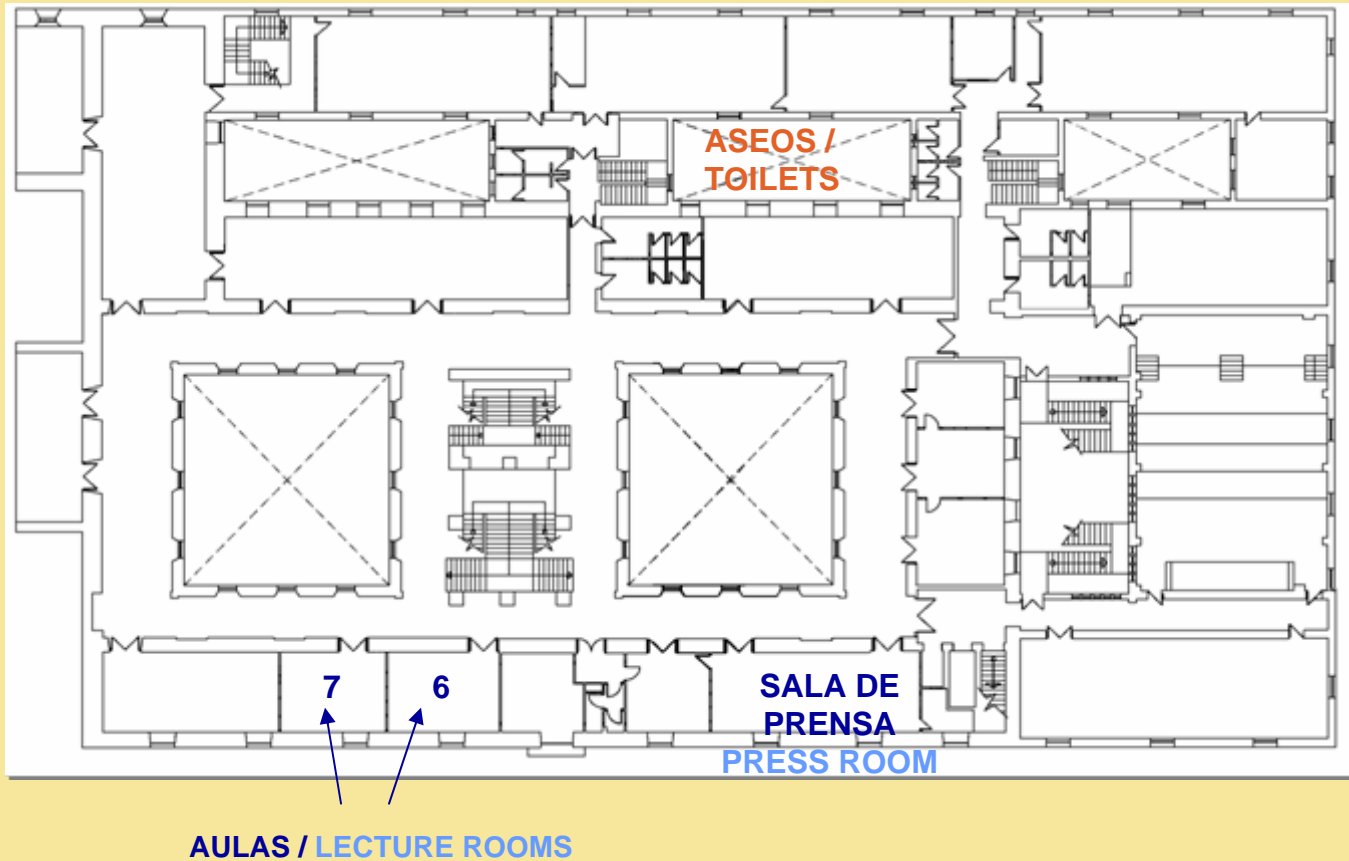


# Spaces location map. CAENTI La Merced Campus

Second International Annual Conference of Territorial Intelligence



## First floor

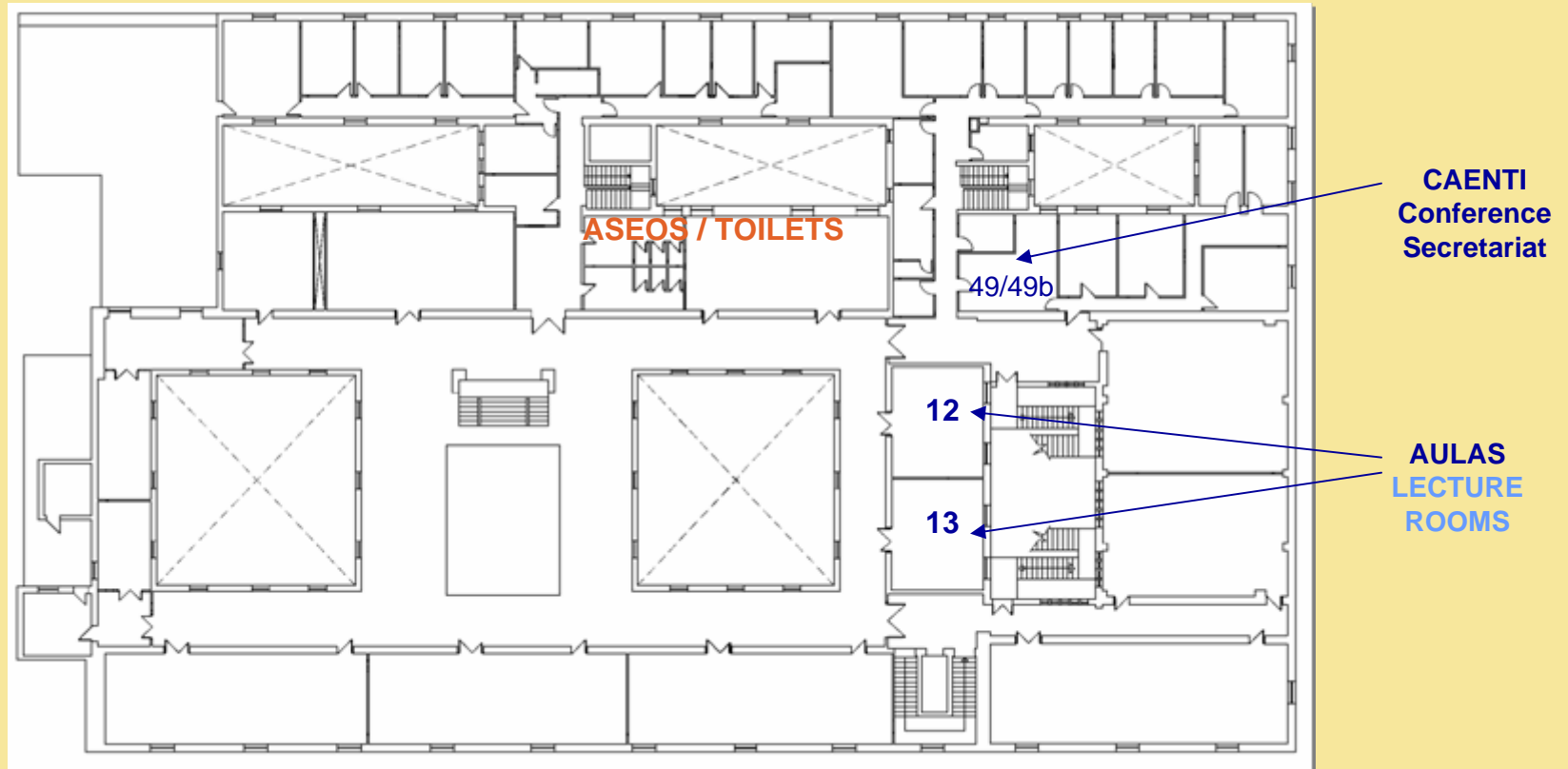


# Spaces location map. CAENTI La Merced Campus

Second International Annual Conference of Territorial Intelligence



## Second floor



# Recommended Accommodation (Location)

Second International Annual Conference of Territorial Intelligence



Concerted hotel:

## Hotel Monteconquero

\* \* \*

Pablo Rada, 10

21003 Huelva

Tél 0034 959 28 55 00

Fax 0034 959 28 39 12

[monteconquero@hotelesmonte.com](mailto:monteconquero@hotelesmonte.com)

Price: 70€ indiv. / 80€ doble (buffet breakfast included) VAT not included

To be booked directly by participants.  
Reference: "CAENTI Conferencia"

Location: Placed in downtown, 5 minutes by foot to the Conference.



<http://www.hotelesmonte.com/hotel-huelva-monteconquero.html>

<http://www.territorial-intelligence.eu>

# Other recommended hotels

Second International Annual Conference of Territorial Intelligence



Others hotels:



## Hotel Tartessos



<http://www.eurostarhotels.com/EN/hotels-in-spain-huelva-hotel-tartessos.html>

## Hotel Tartessos \* \* \*

Avda. Martín Alonso Pinzón 13  
21003 Huelva

Tél 0034 959 28 27 11

Fax 0034 959 25 06 17

[reservas@eurostarstartessos.com](mailto:reservas@eurostarstartessos.com)

Location: Placed in downtown,  
10 minutes by foot to the  
Conference.



## Hotel Los Condes



<http://www.hotelfamiliaconde.com>

## Hotel Los Condes \* \*

Alameda Sundheim, 14  
21003 Huelva

Tél 0034 959 28 24 00

Fax 0034 959 28 50 41

[reservas@hotelfamiliaconde.com](mailto:reservas@hotelfamiliaconde.com)

Location: Placed in downtown,  
15 minutes by foot to the  
Conference.

# Other hotels in Sevilla

Second International Annual Conference of Territorial Intelligence



## Hotel Reyes Católicos

C/ Gravina 57, 41001 Sevilla

Tél 0034 954 211 200 / 211 208 / 211 209

Fax 0034 954 216 312

<http://www.hotelreyescatolicos.info/>

## Prices:

Single:62€/ Doble room to be used single:75€/ Doble:100€

Buffet breakfast: 8€

VAT 7% not included



## Hotel Montecarlo

C/ Gravina 51, 41001 Sevilla

Tél 0034 954 217 501 / 217 502 / 217 503

Fax 0034 954 216 825

<http://www.hotelmontecarlosevilla.com/>

## Prices:

Single:65€/ Doble room to be used single:75€/ Doble:100€

Desayuno buffet: 8€

VAT 7% not included

\* Both hotels are located less than 500m. from the Bus Station "Plaza de Armas".

# Travelling to and from Huelva



Second International Annual Conference of Territorial Intelligence

In next pages you can find trains and buses schedules of the itineraries Madrid-Seville-Huelva and Huelva-Seville-Madrid.

In Seville, taxi is the only mean to arrive from the bus station to the train station. Depending on the traffic, going from Santa Justa Train Station to Plaza de Armas Bus Station could take from 20 to 40 minutes by taxi.





# Transport timetables

Second International Annual Conference of Territorial Intelligence



HUELVA (DAMAS)	1H 15' APROX.	SEVILLA (PLAZA DE ARMAS)		MADRID
7:00	BUS Diario/Dairy bus	8:15		
7:30	of Monday to Friday	8:45		
8:00	BUS Diario/Dairy bus	9:15		
8:30	of Monday to Saturday	9:45		
9:00	BUS Diario/Dairy bus	10:15		
9:30	of Monday to Saturday	10:45		
10:00	Saturday and Sunday	11:15		
10:30	of Monday to Friday	11:45		
11:00	BUS Diario/Dairy bus	12:15		
12:00	of Monday to Saturday	13:15		
13:00	BUS Diario/Dairy bus	14:15		
13:30	of Monday to Friday	14:45		
14:30	of Monday to Friday	15:45		
15:00	BUS Diario/Dairy bus	16:15		
15:30	of Monday to Saturday	16:45		
16:00	of Monday to Friday	17:15		
16:30	BUS Diario/Dairy bus	17:45		
17:00	of Monday to Saturday	18:15		
17:30	Saturday and Sunday	18:45		
18:00	of Monday to Friday	19:15		
19:30	Saturday and Sunday	20:45		
20:00	of Monday to Friday	21:15		
20:30	of Monday to Friday	21:45		
21:00	BUS Diario/Dairy bus	22:15		
(TERMINAL)		(SANTA JUSTA)		(ATOCHA)
7:40	TRAIN:ALTARIA Dairy train TRAIN:ANDALUCIA EXPRES Dairy train	8:44		12:04
7:10			9:25	TRAIN: ALTARIA 01138 Dairy train
			18:00	TRAIN: ALTARIA 09333 Dairy train
14:40	TRAIN:ANDALUCIA EXPRES Dairy train	16:12		12:47
18:50	TRAIN:ANDALUCIA EXPRES Dairy train	20:20		21:22
			6:30	TRAIN:AVE Mo,Tu,Wed,Th,Fr
			7:00	TRAIN:AVE Mo,Tu,Wed,Th,Fr
			7:30	TRAIN:AVE Dairy train
			8:00	TRAIN:AVE Mo,Tu,Wed,Th,Fr,Sa
			8:30	TRAIN:AVE Mo,Tu,Wed,Th,Fr,Sa
			9:00	TRAIN:AVE Dairy train
			10:00	TRAIN:AVE Mo,Tu,Wed,Th,Fr,Sa
			11:00	TRAIN:AVE Dairy train
			12:00	TRAIN:AVE Dairy train
			13:00	TRAIN:AVE Dairy train
			14:00	TRAIN:AVE Dairy train
			15:00	TRAIN:AVE Su,Mo,Tu,Wed,Th,Fr
			16:00	TRAIN:AVE Dairy train
			17:00	TRAIN:AVE Dairy train
			18:00	TRAIN:AVE Dairy train
				9:05
				9:30
				10:05
				10:20
				11:00
				11:35
				12:30
				13:30
				14:30
				15:35
				16:30
				17:30
				18:30
				19:35
				20:30

## TELEPHONES OF INTEREST:

### HUELVA

#### Bus Station (DAMAS):

Tel.: 959 25 69 00

#### Railway Station (RENFE):

Tel.: 959 24 56 14

International Information and reserve:  
902243402/ 902240202

#### Company of taxis (TELE TAXI):

Tel.: 959 25 00 22

### SEVILLA

#### Bus Station (Plaza de Armas)

Tel.: 954 90 77 37

#### Railway Station (Santa Justa)

Tel.: 954 54 03 03

International Information and reserve:  
902243402/ 902240202

#### Company of taxis (TELE TAXI):

Tel.: 954 62 22 22

### MADRID

#### Railway Station (Atocha)

Tel.: 91 506 68 46

International Information and reserve:  
902243402/ 902240202

#### Company of taxis (TELE TAXI):

Tel.: 91 371 21 31 / 91 371 37 11

# Transport timetables

Second International Annual Conference of Territorial Intelligence



## Sevilla City - Airport.

FROM MONDAY TO SATURDAY		SUNDAYS / FESTIVITY DAYS	
PRADO (J.M. OSBORNE)	AIRPORT	PRADO (J.M. OSBORNE)	AIRPORT
05:15 - 45	05:45	06:15	06:45
06:15 - 45	06:15 - 45	07:15	07:45
07:15 - 45	07:15 - 45	08:15	08: 45
08:15 - 45	08:15 - 45	09:15	09:45
09:00 - 15 - 45	09:15 - 30 - 45	10:15	10:45
10:15 - 45	10:15 - 45	11:15	11: 45
11:15 - 30 - 45	11:15 - 45	12:15	12: 45
12:15 - 30 - 45	12:00 - 15 - 45	13:15 - 45	13:45
13:15 - 30 - 45	13:00 - 15 - 45	14:15 - 45	14:15 - 45
14:15 - 45	14:00 - 15 - 45	15:15 - 45	15:15 - 45
15:15 - 45	15:15 - 45	16:15 - 45	16:15 - 45
16:15 - 30 - 45	16:15 - 45	17:15 - 45	17:15 - 45
17:15 - 30 - 45	17:00 - 15 - 45	18:15 - 45	18:15 - 45
18:15 - 45	18:00 - 15 - 45	19:15 - 45	19:15 - 45
19:15 - 45	19:15 - 45	20:15 - 45	20:15- 45
20:15 - 45	20:15 - 45	21:15	21:15 - 45
21:15 - 45	21:15 - 45	22:15	22: 45
22:15 - 45	22:15 - 45	23:15	23:45
23:15 - 45	23:15 - 45		
00:15	00:15 - 45		

### INFORMATION:

Tel.: 954 72 02 00

**OFFICIAL PRICE FOR A TAXI SERVICE FROM THE AIRPORT TO ANY PLACE WITHIN SEVILLA CITY:**

19,50€ (day)

21,50€ (night / festivity day)

+ 0,50€ (luggage)

# Information about meals

Second International Annual Conference of Territorial Intelligence



Participants may pay expenses.  
It is organized as follows:

- For the participants on the meetings hold on Wednesday, the 24<sup>th</sup>:
  - Lunch 24<sup>th</sup>: Lunch will be served at Valdocco. Price 25€
  - Dinner 24<sup>th</sup>: "Patrón" restaurant. Price 25€
- For all the participans in the conference:
  - Lunch for the days 25<sup>th</sup> and 26<sup>th</sup>: Lunch will be at La Merced Atrium. Daily price is 25€ (it includes juice, coffee and cookies in the morning and afternoon).
  - Official Dinner on the 25<sup>th</sup>: Flamenco dinner-show in Flamenco Peña of Huelva. Price: 25€.
  - The Dinner for Friday, the 26<sup>th</sup> is not organized. A restaurant and pubs list will be offered so people could visit the city and discover the great variety of things to the be done a Friday night in Huelva.

To organize the payment:

People arriving on Wednesday, the 24<sup>th</sup> will have to pay 125€ in cash because it is assumed they will assist to Official Dinner.

# Conference Secretariat

Second International Annual Conference of Territorial Intelligence



## Local Employment Observatory

University of Huelva

Campus de "El Carmen", pabellón 7.

21071 - Huelva (Spain)

Email: [huelva2007@ole.uhu.es](mailto:huelva2007@ole.uhu.es)

Web page: [www.ole.uhu.es](http://www.ole.uhu.es)

Web page of the Conference: [www.intelligence-territoriale.eu](http://www.intelligence-territoriale.eu)

(Heading International Conferences and Huelva 2007).

**During the Conference, please contact:**

- **Amélie Bichet-Miñaro**  
+33 698 95 82 66 (CAENTI)
- **María de la O Barroso González**  
+34 649 96 42 58 (UHU)

# Sponsors

Second International Annual Conference of Territorial Intelligence



Coordination Action of the European  
Network of Territorial Intelligence  
A project funded under FP6 of the E.U.



## Organisation:



Universidad  
de Huelva



## Patronage:

